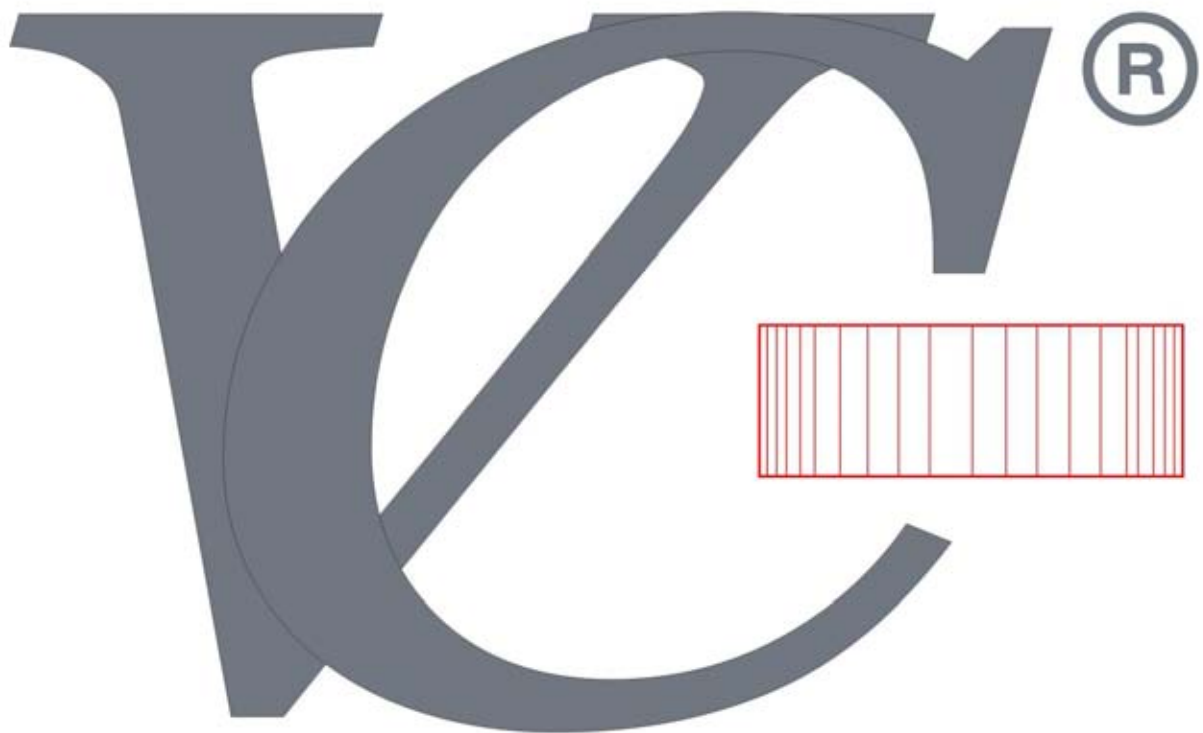


V&C Machinery Sales GmbH



Precision Linear Coil Winding Machines



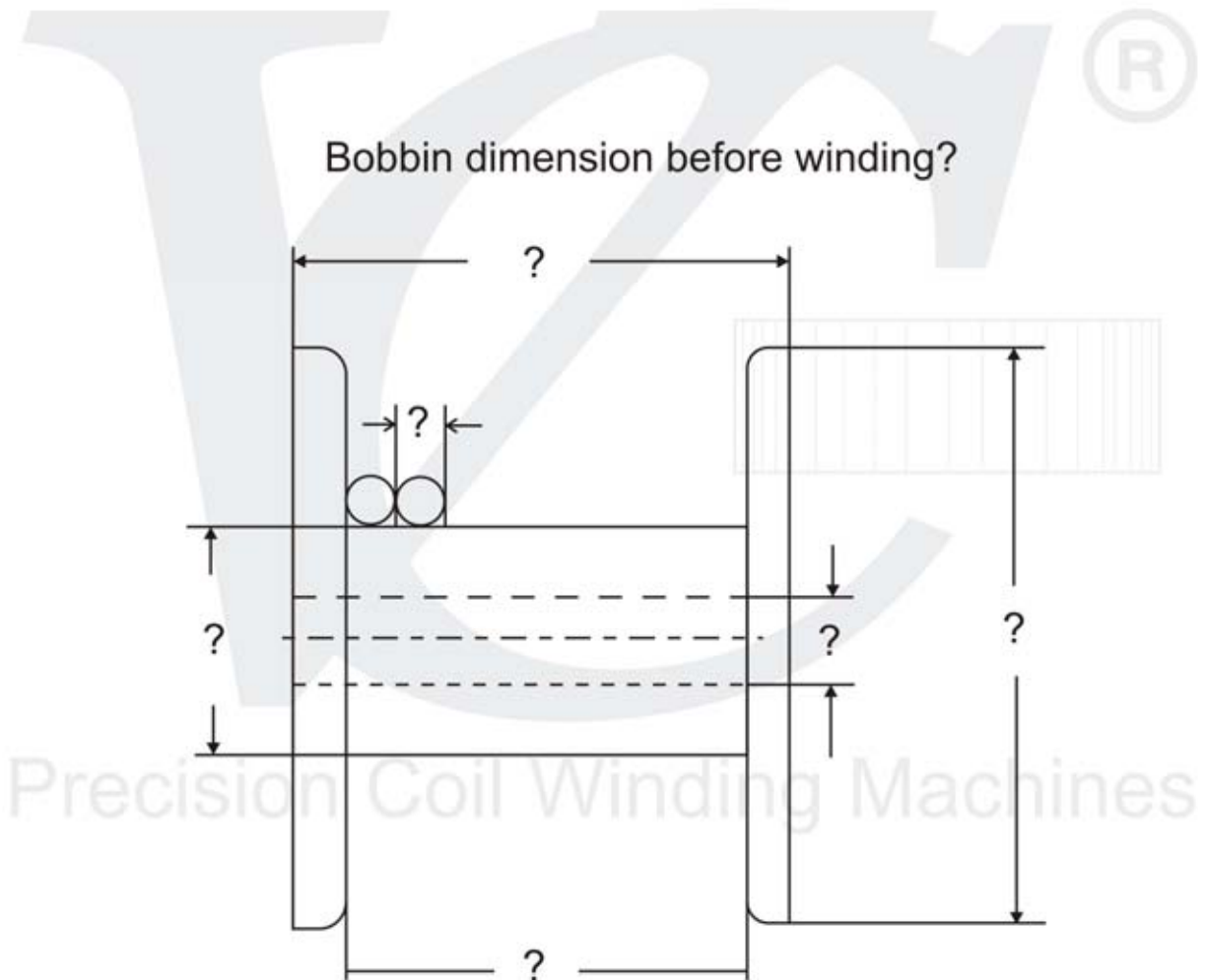


QUESTIONNAIRE

Fax to +49(0)8092-232020-4

Please fill in the following points and send this questionnaire to V&C.

Product?	
Wire Diameter?	
No.of turns?	
Taping	



We reserve the right of alterations & technical developments.



INTRODUCTION



Precision Coil Winding Machines



We are a group of specialised companies with design and production in Germany and UK.

We are also maintaining Sales, Service and Production Centres in America, India and China.

The directors of our companies are Coil Winding Specialists with each more than 25 years experience.

Our philosophy is to offer full customer satisfaction from start to end: perfect consulting and design of tailor made tooling for your winding jobs, top quality of Precision Coil Winders, Installing at your works and after sales service with fast reaction time.

Louis Steven Veress
Managing Director

LCD MACHINE SERIES

Our group of companies offer you:

World Class Coil Winders...

Development + Production of tailor made Winding Tools...

Interchangeable Wire Guides and Tensioners...

Development + Manufacture of special machine solutions...

Over 25 years of experience....

Worldwide after sales network...

Quality + Competitive Prices + Good Service...

for more information please visit our website... www.vc-machinery.com



PC MACHINE SERIES



Made in Germany



LCD Machine Series

First class Technology and Components:

- **Servo Motors and Controls** - from Panasonic
- **VC-Quick-Programming-System** – with 6 programming parameters in less than 1 minute
- **VC-Teach-In-System** – with auto save of adjusted values and quick programming knob for immediate change of any parameter
- **Set up in very short time** – new operators can handle the machine immediately with clearly positioned buttons and switches

Made in UK



PC Machine Series

PC Technology for Specialised Machine Solutions

- PC with large Touch Screen and XP WIN-XP, Network; Ethernet, W-LAN, automatic winding program calculation, self-learning and much more
- **3 different Software Packages**
 - Standard Software Package
 - Trapezoidal Software Package
 - Data Logging Software Package
- **Special Machine Solutions - for example:**
 - Insulation feeding system+accessories for - measuring transformer
 - Edge winding system+accessories for special coil
 - Many special purpose machinery on request



LCD - SERIES

We offer consulting, installation and after sales service for VC Coil Winding Machines.

Bench Machine



VC 300

Floor Machine



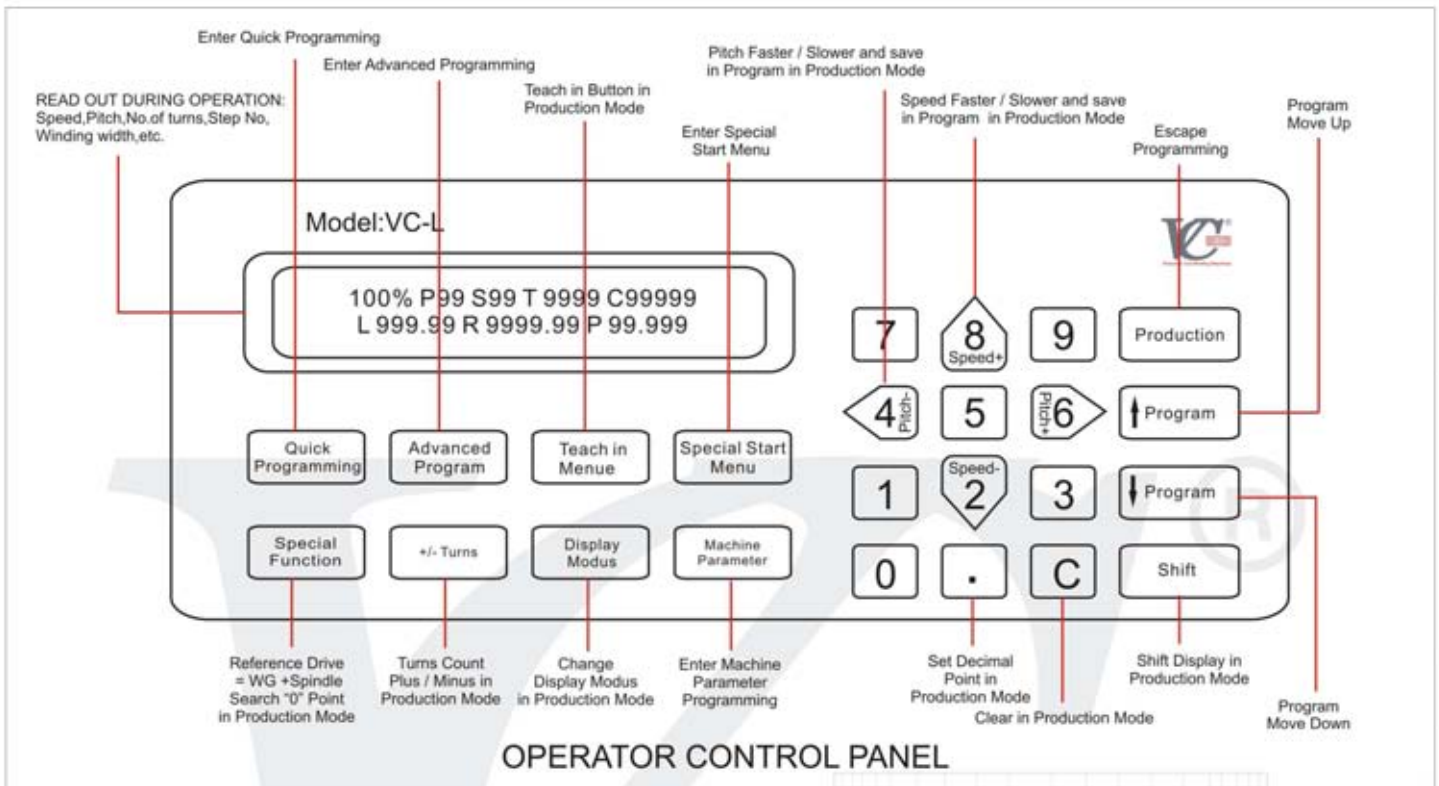
VC 500

Floor Machine



VC 1200





Programming in less than 1 minute with the new V&C Quick Programming System that needs the programming of major functions only (Load turns, Wind turns, Pitch) while retaining all programmable functions known today in the toroid winding industry.

Perfect machine control with 3 standard speed control options: Foot-pedal, Hand-control or Start automatic for selection of the most suitable control system for your application.

Machine set up in less than 1 minute with the V&C Teach-in System that enables pitch and speed adjustment during winding with automatic saving of the improved value.

Change Program with the new Quick programming knob you have immediate access to all parameters.



OPERATING OVERVIEW CONTROL BOARD

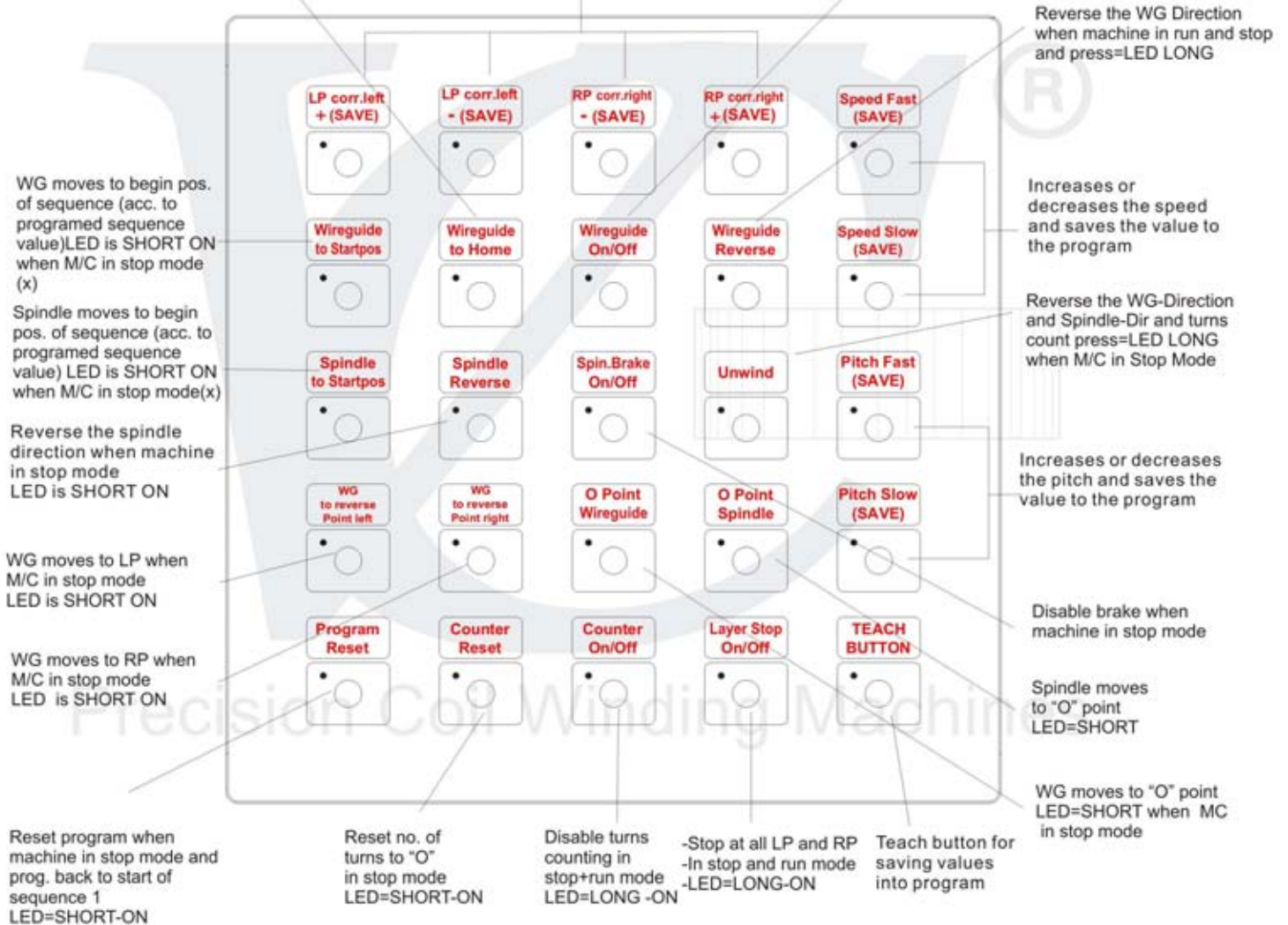


1. When pressing the LED is ON.
2. When pressing the value changes in display.
3. When Pressing then automatic saving this value.
4. Speed value according to machine set up.
5. Correction works in Run Mode and Stop Mode.

WG moves to home pos. according to the value in machine set up when machine in stop mode
LED = SHORT ON

Disablele WG movement
Press=LED LONG when in stop mode and run mode

FUNCTION OF MACHINE CONTROL PANEL



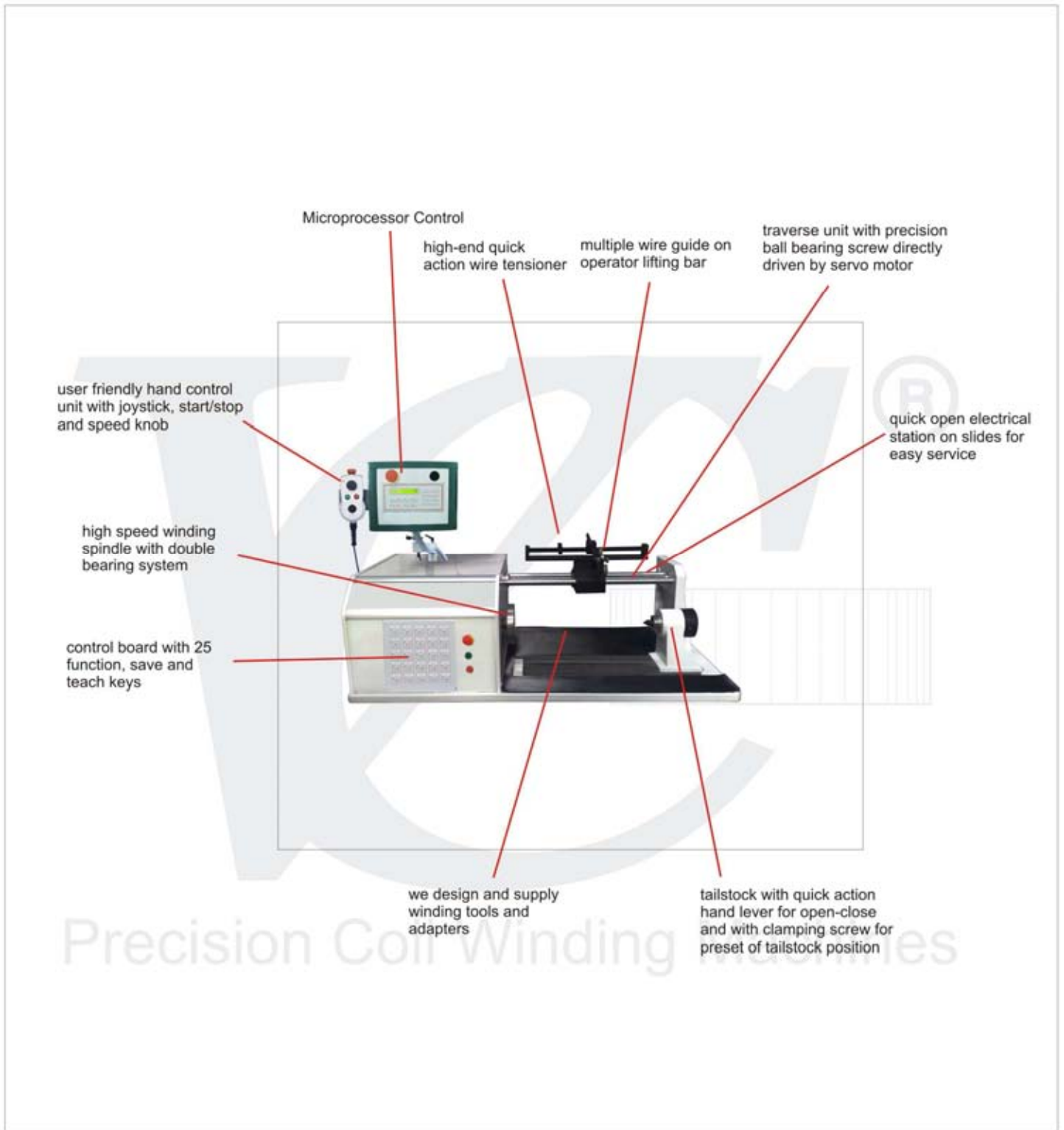
X=Speed=according to the value in Machine Setup





Precision Coil Winding Machines

OPERATING OVERVIEW BENCH MACHINE VC 300



BENCH MACHINE VC 300



Precision Coil Winding Machines

The VC 300 is a Hi-Tech Bench Machine with LCD display module with 2 text lines and incorporates VC's flexible system with interchangeable wire guides and tensioners. It is designed for precision coil winding applications and built with modern Microprocessor Control and two SERVO motors for main and traverse drive. The user friendly software guides the operator through the programming with clear text commands. The user friendly control board and the flexible hand control unit make the VC 300 extremely fast to set up and very easy to use. Typical applications for the Bench Machine VC 300 are the production of small coils. The VC 300 is made of high quality iron framework and robust mechanical parts. Two interchangeable motor pulleys are fitted as standard to give a large range of torques and speeds. The wire guide carriage has been constructed using a precision ball screw and is mounted on a steel bar with linear bearing guides.

TECHNICAL DATA

CONTROLLER:

Microprocessor with LCD display
Multi Language Selection

DISPLAY:

LCD-Display with background illumination:
Continuous read out of operation details

PROGRAMS:

200 Programs:
Basic programming (quick jobs)
Advanced programming (sophisticated jobs)

PROGRAMMING:

User friendly text commands
Separate menu for basic set up

DATA MEMORY:

Interface for PC
Interface for software updates

OPERATOR CONTROLS:

Control Board TP25: 25 Function/Save/Teach keys
Hand Control Unit: Joystick, start/stop, speed knob
Foot Pedals: speed control, spindle brake, creep

SETTING OF LEFT AND RIGHT LIMITS:

With teach and learn system

SPEED AND TORQUE CHANGE:

2 Pulleys
One with high torque for heavy wires
One with high speed for light wires.

TRAVERSE:

Precision ball screw
Servo Motor 0,4 KW

MOTOR POWER:

Servo Motor 1,5 KW

MACHINE WEIGHT:

Approx. 150 kg net, 250 kg gross

MACHINE SPACE:

Approx. 1150 mm x 520 mm

BASIC MACHINE CONSISTS OF:

- 1 x Machine Base Plate
- 1 x Winding Spindle (with faceplate)
- 1 x Traverse Unit
- 1 x Wire Guide Arm
- 1 x Tailstock (with hand lever)
- 1 x Safety Interlock
- 1 x Machine Controller
- 1 x Machine Control Board
- 1 x Foot Pedal (speed control and spindle break)
- 1 x Hand Control Unit

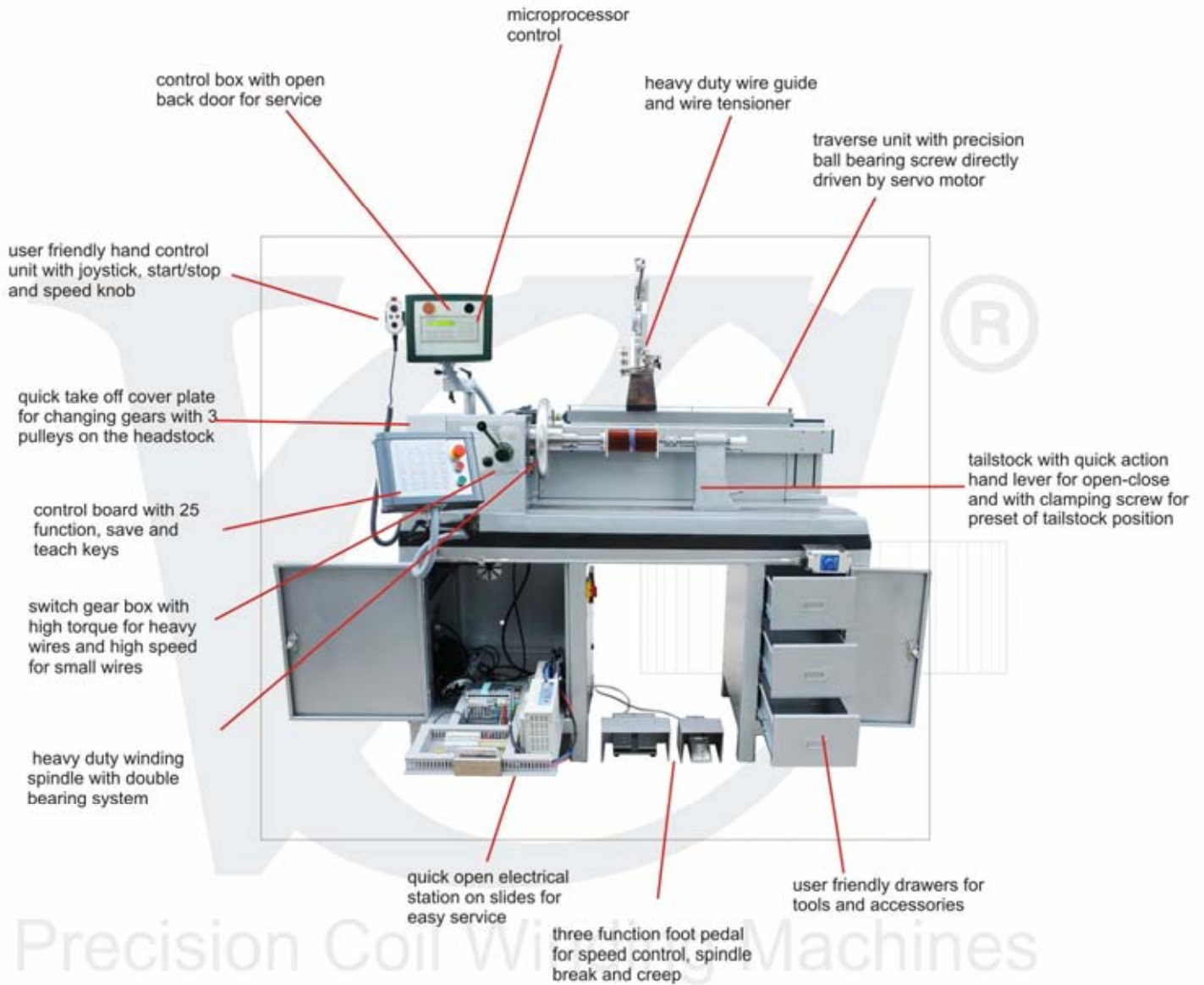


Bench Machine VC 300

Floor Machine VC 300 with table

Speed & Torque Ranges		PRODUCTION	mm	Inch
Speed	Torque	Wire Size	0,01 – 5,0	0,25 – 0,00039
9000 rpm	2 Nm	Pitch	0,01 - 99	0,0004 – 3,9
4500 rpm	5 Nm	Max. Coil Diameter	300	11,814
1000 rpm	22 Nm	Max. Coil Length	350	13,78
500 rpm	45 Nm	Centre distance	380	14,96
Note: The motor and pulleys fitted to the machine can be altered to suit your speed and torque requirements.		Max. Load	150 kg	330 lbs
		Winding Speed	0-9000 rpm	
		Torque	0-45 Nm	





Precision Coil Winding Machines



FLOOR MACHINE VC 500



Precision Coil Winding Machines

The VC 500 is a Hi-Tech Floor Machine with LCD display module with 2 text lines and incorporates VC's flexible system with interchangeable wire guides and tensioners. It is designed for heavy applications and built with modern Microprocessor Control and two SERVO motors for main and traverse drive. The user friendly software guides the operator through the programming with clear text commands. The user friendly control board and the flexible hand control unit make the VC 500 extremely fast to set up and very easy to use. Typical applications for the Floor Machine VC 500 are the production of medium coils with thick wires. It is made of high quality cast iron framework and robust mechanical parts. A two step gear box and three interchangeable motor pulleys are fitted as standard to give a large range of torques and speeds. The wire guide carriage has been constructed using a precision ball screw and is mounted on a steel bar with linear bearing guides.



Floor Machine VC 500

TECHNICAL DATA

CONTROLLER:

Microprocessor with LCD Display
Multi Language Selection

DISPLAY:

LCD-Display with background illumination:
Continuous read out of operation details

PROGRAMS:

200 Programs:
Basic programming (quick jobs)
Advanced programming (sophisticated jobs)

PROGRAMMING:

User friendly text commands
Separate menu for basic set up

DATA MEMORY:

Interface for PC
Interface for software updates

OPERATOR CONTROLS:

Control Board TP25: 25 Function/Save/Teach keys
Hand Control Unit: Joystick, start/stop, speed knob
Foot Pedals: speed control, spindle brake, creep

SETTING OF LEFT AND RIGHT LIMITS:

With teach and learn system

SPEED AND TORQUE CHANGE:

3 pulleys mounted on headstock for quick change of basic ratios.
Gear box with 2 steps (low/high) for quick change of torque and speed

TRAVERSE:

Precision ball screw
Servo Motor 0,45 KW

MOTOR POWER:

Servo Motor 2,0 KW

MACHINE WEIGHT:

Approx. 800 kg net, 1000 kg gross

MACHINE SPACE:

Approx. 1600 mm x 500 mm, height 1600 mm

BASIC MACHINE CONSISTS OF:

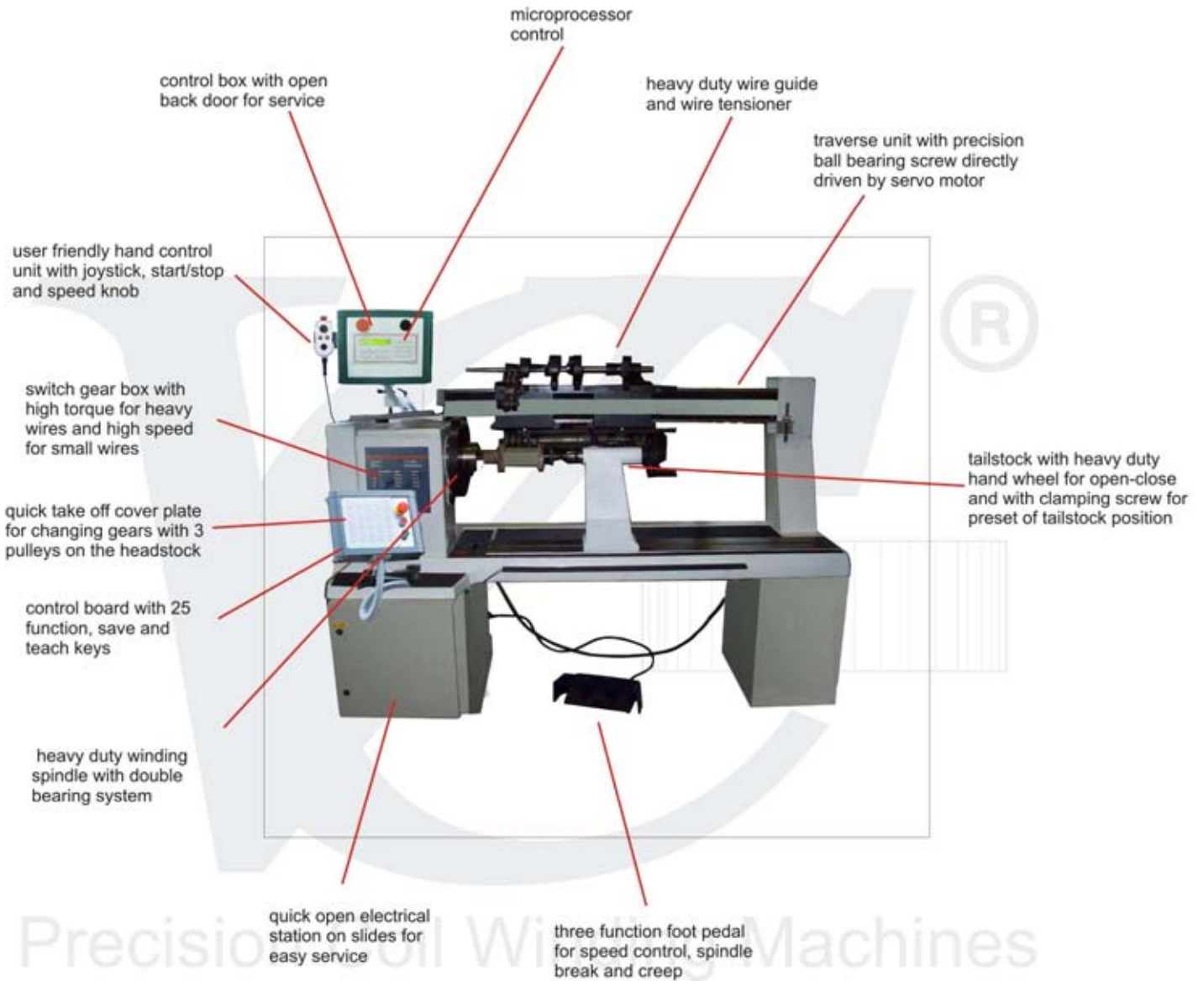
- 1 x Machine Stand
- 1 x Winding Spindle (with faceplate)
- 1 x Traverse Unit
- 1 x Wire Guide Arm
- 1 x Tailstock (with hand lever)
- 1 x Safety Interlock
- 1 x Machine Controller
- 1 x Machine Control Board
- 1 x Foot Pedal (speed control and spindle break)
- 1 x Gear Box (with 2 steps)
- 1 x Hand Control Unit

Speed & Torque Ranges	
Gearbox high	Gearbox low
3000 rpm/7 Nm	396 rpm/53 Nm
1385 rpm/15 Nm	183 rpm/115 Nm
639 rpm/33 Nm	84 rpm/249 Nm

Note:
The motor and pulleys fitted to the machine can be altered to suit your speed and torque requirements.

PRODUCTION	mm	inch
Wire Size	0.01-12.0	0.47-0.00039
Pitch	0.01-99	0.0004-3.9
Max. Coil Diameter	500	19.69
Max. Coil Length	850	33.46
Centre distance	900	35.43
Max. Load	500kg	1100 lbs
Winding Speed	0-3000 rpm	
Torque	0-249Nm	





Precision Coil Winding Machines



FLOOR MACHINE VC 1200



The VC 1200 is a Hi-Tech Floor Machine with LCD display module with two text lines and incorporates VC's flexible system with interchangeable wire guides and tensioners. It is designed for extra heavy applications and built with modern Microprocessor Control and two SERVO motors for main and traverse drive. The user friendly software guides the operator through the programming with clear text commands. The user friendly control board and the flexible hand control unit make the VC 1200 extremely fast to set up and very easy to use. Typical applications for the Floor Machine VC 1200 are the production of coils with very thick wires and large transformers with high number of turns. The VC 1200 is made of high quality cast iron framework and robust mechanical parts. A two step gear box is fitted as standard to give a large range of torques and speeds. The wire guide carriage has been constructed using a precision ball screw and is mounted on a steel bar with linear bearing guides.



Floor Machine VC 1200

TECHNICAL DATA

CONTROLLER:
Microprocessor with LCD Display
Multi Language Selection

DISPLAY:
LCD-Display with background Illumination:
Continuous read out of operation details

PROGRAMS:
200 Programs:
Basic programming (quick jobs)
Advanced programming (sophisticated jobs)

PROGRAMMING:
User friendly text commands
Separate menu for basic set up

DATA MEMORY:
Interface for PC
Interface for software updates

OPERATOR CONTROLS:
Control Board TP25: 25 Function/Save/Teach keys
Hand Control Unit: Joystick, start/stop, speed knob
Foot Pedals: speed control, spindle brake, creep

SETTING OF LEFT AND RIGHT LIMITS:
With teach and learn system

SPEED AND TORQUE CHANGE:
3 pulleys mounted on headstock for quick change of basic ratios.
Gear box with 2 steps (low/high) for quick change of torque and speed

TRAVERSE:
Precision ball screw
Servo Motor 1,0 KW

MOTOR POWER:
Servo Motor 4,0 KW, 380/415 V – 3ph

MACHINE WEIGHT:
Approx. 1000 kg net, 1200 kg gross

MACHINE SPACE:
Approx. 2100 mm x 800 mm, height 2000 mm

BASIC MACHINE CONSISTS OF:
1 x Machine Stand
1 x Winding Spindle (with faceplate)
1 x Traverse Unit
1 x Wire Guide Arm
1 x Tailstock (with hand lever)
1 x Safety Interlock
1 x Machine Controller
1 x Machine Control Board
1 x Foot Pedal (speed control and spindle break)
1 x Gear Box (with 2 steps)
1 x Hand Control Unit

Speed & Torque Ranges	
Gearbox high	Gearbox low
570 rpm/98 Nm	143 rpm/390 Nm
250 rpm/222 Nm	65 rpm/890 Nm

Note:
The motor and pulleys fitted to the machine can be altered to suit you speed and torque requirements.

PRODUCTION	mm	inch
Wire Size	0.01-15.0	0,59-0,00039
Pitch	0.01-99	0.0004-3.9
Max. Coil Diameter	800	31.5
Max. Coil Length	1150	45.28
Centre distance	1200	47.24
Max. Load	1500kg	3300 lbs
Winding Speed	0-570 rpm	
Torque	0-890 Nm	



ACCESSORIES



Adjustable Wire Guide Bars
(length+Approach Angle)



Pneumatic Tailstock



3 Jaw Chuck



Wire Guide Bars for Winding Multiple Coils

- **ACCESSORIES FOR ROUND WIRE:**
Two wire tensioners for round wire (0,11-0,45&0,25 – 3,0 mm)
HD Stand Dereeler for round wire
Additional wire guide (V-groove)
Additional wire guide arm (2 pulleys)

- **ACCESSORIES FOR FLAT WIRE:**
Wire guide arm
Adjustable guide pulley
Dereeler

- **ACCESSORIES FOR PAPER:**
Paper dereeler for layer insulation (incl. tension unit)
Tape dereeler for edge taping (incl. tension unit)



Wire Tensioners



Wire Guide



Wire Tensioners



Adjustable Wire Guide



PC - SERIES

We offer consulting, installation and after sales service for WT Coil Winding Machines.

Bench Machine



WT-300-PC

Floor Machine



WT-500-PC

Floor Machine



WT-1200-PC





Precision Coil Winding Machines

PROGRAMMING OVERVIEW PC CONTROLLER

Our PCWM control system is one of the most user-friendly systems on the market today. The system uses a colour touch screen display. Programming of complex coils is made easy with simple interactive screens. Critical winding information including turns counts and alarm messages are displayed clearly during winding.

The PCWM control is a fully programmable system with many manual override options which makes it a very powerful and flexible winding control.



Production Screen

- Colour Touch Screen controls running on an industrial PC
- Quick and easy programming with user friendly screens
- Winding limits and pitch can be easily adjusted during winding and saved back to the program
- Jog facility (moving the traverse guide arm when the machine is in stop)
- Alarm & Fault indicators are shown clearly on the Run screen
- Easily linked to a PC network for remote programming or data backup
- Assistance is available direct from WT via a preinstalled modem connection
- Language selection

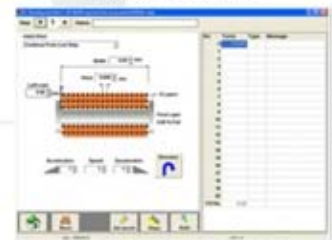
WT offers 3 different software packages:

Standard Software Package

The standard PCWM control system allows you to program complex coils, very quickly and easily.

The programming screens use graphics to help the user during programming. A number of optional software upgrades are available for the PC control system to enable more complex winding operations and data logging.

Program Screen

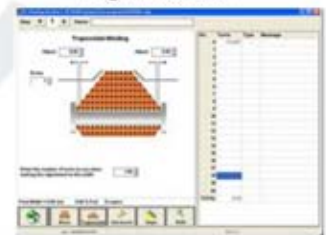


Trapezoidal Software Package

The width of the coil can be programmed to increase or decrease at after "x" number of layers. This will allow you to program the following coils very quickly and easily.

- A standard pyramid shape
- An inverted pyramid shape
- An angular Shape. One side of the coil remains straight while the other side reduces or increases in width

Program Screen



Data Logging Package

- Operator details (Name, time logged on/off, password protected)
- Component serial number. Entered manually or by using a bar code reader.
- Time taken to wind a coil.
- Tension logging during winding.
- Coil dimensions: length, width and axial.

The data is stored in CSV format and can be easily exported to another program for viewing in a spreadsheet or database.

Program Screen



PROGRAMMING FLOW CHART

Start Menu:



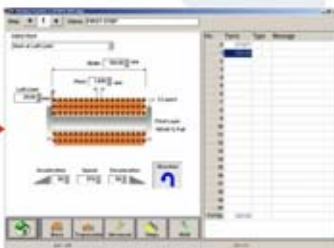
Login Menu:



Machine Setup Menu:



Program Screen-Basic



Program Screen-Turns



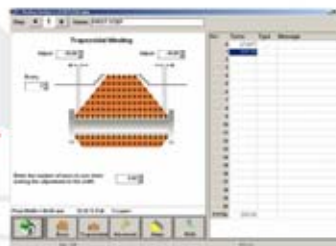
Program Screen-Steps



Program Screen -Advanced Menu



Program Screen -Trapezoidal Menu (Optional)



Production Screen



WIRE TENSIONERS

Features:



WT 100 Tensioner

The Wt100 is a precision wire tensioner with a graduated scale to give high performance coupled with ease of use. With two separate settings for basic tension and back tension, the response of the tensioner can be fine tuned. A high precision feed-back mechanism and low inertia moving parts ensure winding consistency. Diamond lapped ceramic wire guides reduce the possibility of damage to the wire enamel.

Optional Accessories

- Base and stand unit for table mounting
- Fixing plate for mounting onto the HD tensioner stand

HD Tensioner

The HD tensioner has a brake system controlled by the dancer arm, when machine stops or when the wire breaks, the dancer arm moves up and this actuates the brake clamp. The strength of the brake clamp can be adjusted.

Optional Accessories

- Base and stand unit
The base unit is made from a solid steel plate and can hold large wire reels up to 320mm diameter. 3x holes in the base allow it to be firmly secured to the floor.
- Funnel wire guide.

HDF 700 Tensioner

The frame of the HDF700 tensioner is built from strong steel tubular section, and can be firmly secured to the floor. The wire supply spool is mounted horizontally onto the main arm of the HDF700 tensioner. The tension is supplied to the spool via a pneumatic disk brake mounted on the tensioner frame & tension is regulated by an adjustable air regulator. The maximum tension can be increased by the addition of extra brake units.

An air shut off valve is also supplied with the tensioner which allows the operator to turn off the air pressure to the tensioner. This will switch off the tension on the wire, allowing the operator to easily pull a length of wire from the tensioner.

Optional Accessories

- Automatic air pressure regulator (reduces tension as the wire on the spool decreases)
- Double spool tensioner
- Motorised rewind system
- Vertical spool mounting



BENCH MACHINE WT 300 PC



Precision Coil Winding Machines

The WT 300 PC is a Hi-Tech Bench Machine with Touch PC and interchangeable wire guides and tensioners. It is designed for precision coil winding applications and built with modern PLC Control and two SERVO motors for main and traverse drive. The user friendly software guides the operator through the programming with clear text and graphical screens. Typical applications for the Bench Machine WT 300 PC are the production of small coils. The WT 300 PC is made of high quality steel framework and robust mechanical parts. Two interchangeable motor pulleys are fitted as standard to give a large range of torques and speeds. Optional the machine can be fitted with a programmable 2-step automatic gear change system for changing the speed and torque ranges. The wire guide carriage has been constructed using a precision ball screw and is mounted on a steel bar with linear bearing guides.

TECHNICAL DATA

CONTROLLER:
PLC Control, extensible Inputs & Outputs
Multi Language Selection

DISPLAY:
Industrial Touch PC, colour touch screen
Full display of operation details and Alarm & Fault indicator

SOFTWARE PROGRAMS:
STANDARD SOFTWARE:
Basic programming (quick jobs)
Advanced programming (sophisticated jobs)
TRAPEZOIDAL SOFTWARE PACKAGE:
Pyramid shape, Inverted Pyramid shape, Angular shape

DATA LOGGING:
Operator Details, Serial Number, Batch Time & Qty., Wire Tension & Coil Dimensions

PROGRAMMING:
WinXP, user friendly text commands and screens

DATA MEMORY:
Network, W-LAN, remote programming or back-up
Ethernet, modem connection for support

OPERATOR CONTROLS:
PC-Controller, Joystick, start/stop & function keys
Foot Pedals: speed control, spindle brake, creep
Jog facility for diverse and spindle in stop and run modus

SETTING OF LEFT AND RIGHT LIMITS:
Winding limits, easy adjusted during winding and saved to the program

SPEED AND TORQUE CHANGE:
2 Pulleys, interchangeable ranges of torques and speeds
Optional 2-way clutch system for changing speed and torque ranges.

TRAVERSE:
Precision ball screw
Servo Motor 0,4 KW

MOTOR POWER:
Servo Motor 1,0 KW

MACHINE WEIGHT:
Approx. 150 kg net, 200 kg gross

MACHINE SPACE:
Approx. 1150 mm x 520 mm

BASIC MACHINE CONSISTS OF:
1 x Machine Base Plate
1 x Winding Spindle (with faceplate)
1 x Traverse Unit
1 x Wire Guide Arm (with pulleys for round wire)
1 x Tailstock (with hand lever)
1 x Safety Interlock (Sliding Guard)
1 x PC Controller
1 x Foot Pedal (speed control and spindle break)



Bench Machine WT 300 PC

Speed & Torque Ranges	
Speed	Torque
9000 rpm	2 Nm
4500 rpm	5 Nm
1000 rpm	22 Nm
500 rpm	45 Nm

Note:
The motor and pulleys fitted to the machine can be altered to suit to speed and torque requirements.

PRODUCTION	mm	inch
Wire Size	0.01-5,0	0,25-0,00039
Pitch	0.01-99	0.0004-3.9
Max. Coil Diameter	300	11.814
Max. Coil Length	350	13.78
Centre distance	380	14.96
Max. Load	150 kg	330 lbs
Winding Speed	0-9000 rpm	
Torque	0-45 Nm	





OVERVIEW TYPICAL INSTALLATION WT 500 PC

Precision Coil Winding Machines

WT 500 PC transport



Floor mounting of WT 500 PC at customers site



Floor mounting of HDF 700-Pneumatic Reel Tensioners



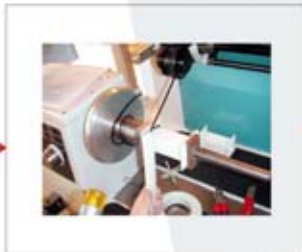
Set up WT 500 PC at customers site



Set up HDF 700 pneumatic pressure control device



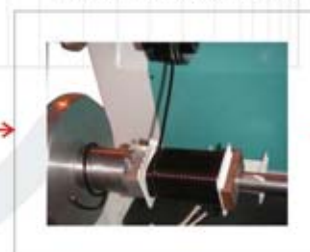
Fixing wire to coil with WT 500 PC



Winding 1st layer with WT 500 PC



Winding 2nd layer with WT 500 PC



Winding 3rd layer with WT 500 PC



Machine ready for mass production WT 500 PC



FLOOR MACHINE WT 500 PC



Precision Coil Winding Machines

The WT 500 PC is a Hi-Tech Floor Machine with Touch PC and interchangeable wire guides and tensioners. It is designed for heavy coil winding applications and built with modern PLC Control, AC motor for main drive and SERVO motor for traverse drive. The user friendly software guides the operator through the programming with clear text and graphical screen. Typical applications for the Floor Machine WT 500 PC are the production of medium coils with thick wires. The WT 500 PC is made of high quality cast iron framework and robust mechanical parts. A two step gear box and three interchangeable motor pulleys are fitted as standard to give a large range of torques and speeds. The wire guide carriage has been constructed using a precision ball screw and is mounted on a steel bar with linear bearing guides.



Illustration: WT 500 with PLC Control

TECHNICAL DATA

CONTROLLER:

PLC Control, extensible Inputs & Outputs
Multi Language Selection

DISPLAY:

Industrial Touch PC, colour touch screen
Full display of operation details and Alarm & Fault indicator

SOFTWARE PROGRAMS:

STANDARD SOFTWARE:
Basic programming (quick jobs)
Advanced programming (sophisticated jobs)
TRAPEZOIDAL SOFTWARE PACKAGE:
Pyramid shape, Inverted Pyramid shape, Angular shape

DATA LOGGING:

Operator Details, Serial Number, Batch Time & Qty., Wire Tension & Coil Dimensions

PROGRAMMING:

WinXP, user friendly text commands and screens

DATA MEMORY:

Network, W-LAN, remote programming or back-up
Ethernet, modem connection for support

OPERATOR CONTROLS:

Control Board, PC-Controller, Joystick, start/stop & function keys
Foot Pedals: speed control, spindle brake, creep
Jog facility for diverse and spindle in stop and run modus

SETTING OF LEFT AND RIGHT LIMITS:

Winding limits, easy adjusted during winding and saved to the program

SPEED AND TORQUE CHANGE:

3 Pulleys, interchangeable ranges of torques and speeds
2-step reduction gear box

TRAVERSE:

Precision ball screw
Servo Motor 0,40 KW

MOTOR POWER:

AC Motor 2,2 KW

MACHINE WEIGHT:

Approx. 800 kg net, 1000 kg gross

MACHINE SPACE:

Approx. 1605 mm x 608 mm, 1600 mm

BASIC MACHINE CONSISTS OF:

1 x Machine Stand
1 x Winding Spindle (with faceplate)
1 x Traverse Unit
1 x Wire Guide Arm (with pulleys for round wire)
1 x Tailstock (with hand lever)
1 x Safety Interlock (String)
1 x PC Controller
1 x Machine Control Board
1 x Foot Pedal (speed control and spindle break)
1 x Gear Box (2-steps)

Speed & Torque Ranges	
Gearbox high	Gearbox low
3000 rpm/7 Nm	396 rpm/53 Nm
1385 rpm/15 Nm	183 rpm/115 Nm
639 rpm/33 Nm	84 rpm/ 249Nm
<p>Note: The motor and pulleys fitted to the machine can be altered to suit to speed and torque requirements.</p>	

PRODUCTION	mm	inch
Wire Size	0.01-12.0	0.47-0.00039
Pitch	0.01-99	0.0004-3.9
Max. Coil Diameter	500	19.69
Max. Coil Length	850	33.46
Centre distance	900	35.43
Max. Load	500 kg	1100 lbs
Winding Speed	0-3000 rpm	
Torque	0-249 Nm	





OVERVIEW TYPICAL INSTALLATION WT 1200 PC

Precision Coil Winding Machines

WT 1200 PC transport



WT 1200 PC unpacking



Programming at customer's site



Machine set up at customer's site



Test winding



Machine ready for mass production



FLOOR MACHINE WT 1200 PC



The WT 1200 PC is a Hi-Tech Floor Machine with Touch PC and interchangeable wire guides and tensioners. It is designed for extra heavy coil winding applications and built with modern PLC Control, AC motor for main drive and SERVO motor for traverse drive. The user friendly software guides the operator through the programming with clear text and graphical screens. Typical applications for the Floor Machine WT 1200 PC are the production of coils with very thick wires and large transformers with high number of turns. The WT 1200 PC is made of high quality cast iron framework and robust mechanical parts. A two step gear box is fitted as standard to give a large range of torques and speeds. The wire guide carriage has been constructed using a precision ball screw and is mounted on a steel bar with linear bearing guides.



Illustration: WT 1200 with PC Control

TECHNICAL DATA

CONTROLLER:

PLC Control, extensible Inputs & Outputs
Multi Language Selection

DISPLAY:

Industrial Touch PC, colour touch screen
Full display of operation details and Alarm & Fault indicator

SOFTWARE PROGRAMS:

STANDARD SOFTWARE:
Basic programming (quick jobs)
Advanced programming (sophisticated jobs)
TRAPEZOIDAL SOFTWARE PACKAGE:
Pyramid shape, Inverted Pyramid shape, Angular shape

DATA LOGGING:

Operator Details, Serial Number, Batch Time & Qty., Wire Tension & Coil Dimensions

PROGRAMMING:

WinXP, user friendly text commands and screens

DATA MEMORY:

Network, W-LAN, remote programming or back-up
Ethernet, modem connection for support

OPERATOR CONTROLS:

Control Board, Joystick, start/stop & function keys
Foot Pedals: speed control, spindle brake, creep
Jog facility for diverse and spindle in stop and run modus

SETTING OF LEFT AND RIGHT LIMITS:

Winding limits, easy adjusted during winding and saved to the program

SPEED AND TORQUE CHANGE:

2-step reduction gear box

TRAVERSE:

Precision ball screw
Servo Motor 0,40 KW

MOTOR POWER:

AC Motor 5,5 KW, 380/415 V – 3 ph

MACHINE WEIGHT:

Approx. 1000 kg net, 1200 kg gross

MACHINE SPACE:

Approx. 2100 mm x 800 mm, 2000 mm

BASIC MACHINE CONSISTS OF:

- 1 x Machine Stand
- 1 x Winding Spindle (with faceplate)
- 1 x Traverse Unit
- 1 x Wire Guide Arm (with pulleys for round wire)
- 1 x Tailstock (with hand lever)
- 1 x Safety Interlock (String)
- 1 x PC Controller
- 1 x Machine Control Board
- 1 x Foot Pedal (speed control and spindle break)
- 1 x Gear Box (2-steps)

Speed & Torque Ranges	
Gearbox high	Gearbox low
570 rpm/98 Nm	143 rpm/390 Nm
250 rpm/222 Nm	65 rpm/890 Nm

Note:
The motor and pulleys fitted to the machine can be altered to suit to speed and torque requirements.

PRODUCTION	mm	inch
Wire Size	0.01-15.0	0.59-0.00039
Pitch	0.01-99	0.0004-3.9
Max. Coil Diameter	800	31.5
Max. Coil Length	1150	45.28
Centre distance	1200	47.24
Max. Load	1500kg	3300 lbs
Winding Speed	0-570 rpm	
Torque	0-890 Nm	





SALES AND SERVICE CENTRES

Precision Coil Winding Machines

WORKSHOPS:

V&C Machinery Sales GmbH
Dr.-Wintrich-Str.16 85560 Ebersberg Germany (Head Office)
Tel.: +49-8092-232020-3, Fax: +49-8092-232020-4
Email: info@vc-machinery.eu



V&C Machinery Production HK Ltd.
No 1, Yufeng Garden, 82 District Baoan,
Shenzhen City, Guangdong Province, PR China
Tel: +86-755-29971012, Fax: +86-755-29971013
Email: aubrey@vc-machinery.com



SALES AND SERVICE CENTRES:

EUROPE: **V&C Machinery Sales GmbH**
Dr.-Wintrich-Str.16 85560 Ebersberg Germany (Head Office)
Tel.: +49-8092-232020-3, Fax: +49-8092-232020-4
Email: info@vc-machinery.eu



CHINA: **V&C Machinery Production HK Ltd.**
No 1, Yufeng Garden, 82 District Baoan,
Shenzhen City, Guangdong Province, PR China
Tel: +86-755-29971012, Fax: +86-755-29971013
Email: aubrey@vc-machinery.com



AMERICA: **V&C Machinery (USA) LLC**
20 Hoiles Drive, Unit B, Kenilworth, New Jersey 07033, USA
Tel: +01-908-245 2270, Fax: +01-908-245 1770
Email: mmayer@vc-machinery.us



INDIA: **Ruff India Pvt., Ltd.**
A-186, Telephone Exchange Lane, Mahipalpur, New Delhi -110037
Tel: +91-11-41019214, 26784948, Fax: +91-11-2678 1405
Email: sales@ruffindia.com



RUSSIA: **Connectors & Engineering**
Krasnokazarmennaya Str.3, Build4, 111250 Moscow, Russia
Tel.: +007-495 646 3541, Fax: +007-495 646 3542
Email: ermishkina-mv@faston.ru - Internet: www.faston.ru



UK: **Winding Technology Ltd.**
Moorlands House Midway, South Crosland
Huddersfield HD4 7DA, United Kingdom
Tel.: +44-1484-663 389, Fax: +44-1484-666 783
Email: sales@windingtechnology.com



JAPAN: **Wips Technology Ltd.**
37-5, 2-Chome, Tateishi, Katsushika-ku, Tokyo 124-0012, Japan
Tel: +81-3-5670-7318, Fax: +81-3-5670-7319
Email: t.shibata-wips_h.d@rhythm.ocn.ne.jp



AGENTS:
ASIA: **V&C Machinery Sales Ltd.**
Suite 2001, Marina House, 68 Hing Man Street, Sai Wan Ho, Hong Kong
Tel.: +86-755-29971012, Fax: +86-755-29971013
Email: sales@vc-machinery.com



EUROPE: **CF Industrievertretungen**
Laudongasse 7/3, 1080 Vienna, Austria
Tel.: +43-664-1001407, Fax: +43-1-4086720
Email: c.fuchs@mac.com



FRANCE: **EL GROUPE**
82, Bd de Lattre de Tassigny, BP90-0033, 17202 Royan, France
Tel: +33-676-417 112, +33-546-056 222
Email: e-lacoste@wanadoo.fr - Internet: www.el-groupe.com



KOREA: **Kyung IL Corporation**
RM. 706 Ace Techotower III 197-48, Guro 3dong, Guro-ku Seoul, Korea
Tel.: +82-2-2109-6677, Fax: +82-2-2109-6680
Email: jeffyang@kyungilcorp.com



SOUTH AFRICA: **Peter Souris & Co. (PTY) Ltd.**
62 Eloff Str. Ext. Village Deep Jhb 2201, P.O. Box 57064
Springfield 2137, South Africa
Tel.: +27-11-493-20423, Fax: +27-11-493-0208
Email: psouris@global.co.za - Internet: www.petersouris.co.za



www.vc-machinery.com

